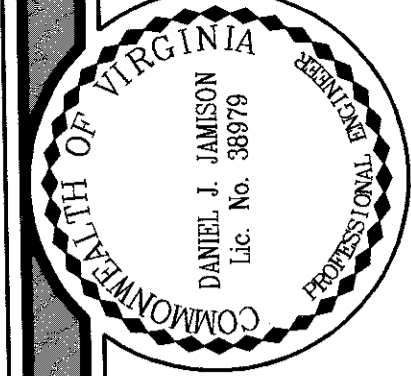
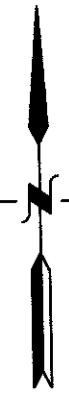
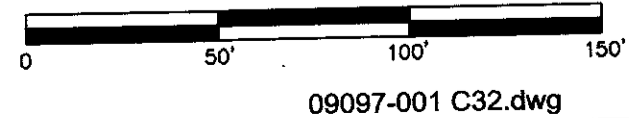
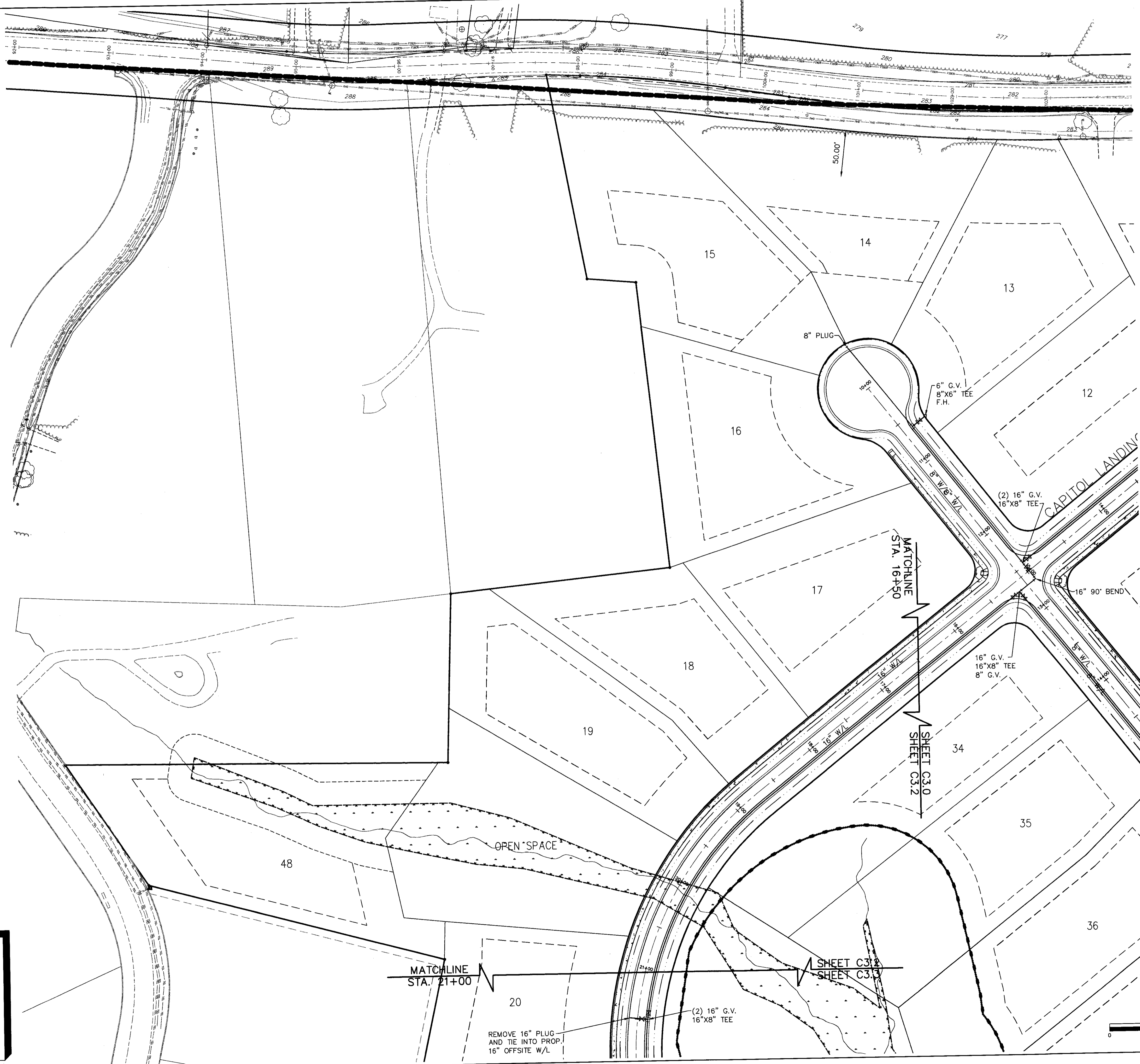


K:\Residential\09097-001-Williamsburg_West_Overall_Subdivision\09097-001\LD\Drawings\Construction_Dwg\09097-001_C32.dwg 8/19/2009 8:53 AM

THE LOCATION OF EXISTING UTILITIES, CONDUITS OR OTHER STRUCTURES ACROSS, UNDERNEATH, OR OTHERWISE ALONG THE LINE OF PROPOSED WORK AREA NOT NECESSARILY SHOWN ON THE PLANS, AND IF SHOWN ARE ONLY APPROXIMATELY CORRECT. THE CONTRACTOR SHALL VERIFY LOCATION AND ELEVATION OF ALL STRUCTURES AND UTILITIES (OVERHEAD AND UNDERGROUND) IN AREAS OF CONSTRUCTION PRIOR TO STARTING WORK. CONTRACTOR SHALL CALL MISS UTILITY TOLL FREE AT 1-800-552-7001 AT LEAST 48 HOURS PRIOR TO CONSTRUCTION. CONTACT THE ENGINEER IMMEDIATELY IF THE LOCATION OR ELEVATION DIFFERS FROM THAT SHOWN ON THE PLAN AND APPEARS TO BE IN CONFLICT WITH PROPOSED WORK.



REVISIONS:

DESIGNED:	GPB
DRAWN:	GPB
CHECKED:	DJJ

KOONTZ-BRYANT, P.C.
 Site Development Solutions
 1703 NORTH FARHAM ROAD, SUITE 100
 RICHMOND, VIRGINIA 23229
 (804) 740-9200 FAX (804) 740-7338
 kbpc@koontzbryant.com



WILLIAMSBURG WEST OVERALL
 CHESTERFIELD COUNTY, VA
 MATOACA DISTRICT
ROAD, DRAINAGE, AND UTILITY PLAN

DATE:	AUGUST 28, 2009
SCALE:	1" = 50'
JN:	09097.001

C3.2

09097-001 C32.dwg