



**FOR LEASE**

10051 Midlothian Turnpike,  
Midlothian, VA

\$6,800/month

Former bank building located on  
Midlothian Turnpike. Easily accessible  
in highly traveled area with break in  
median.

- Zoned C-5
- Built in 1974
- Lot—0.913 acres
- Building—4,209 square feet
- Paved area with 30+ spaces
- Great location with heavy traffic
- Median break for easy access
- NNN Lease



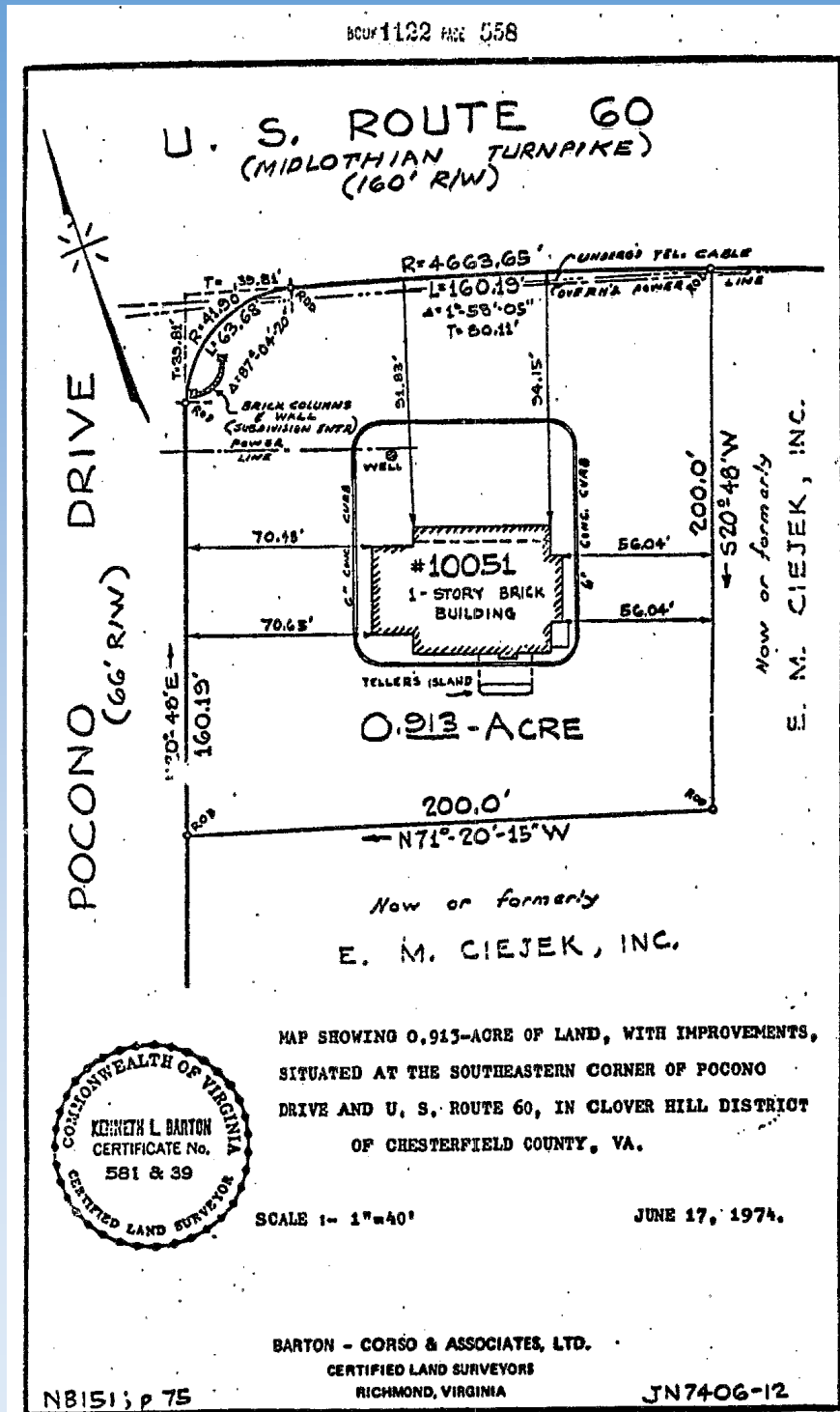
Mark Specter  
Broker  
[mspecter@specterproperties.com](mailto:mspecter@specterproperties.com)

Kevin Specter  
Associate Broker  
[kspecter@specterproperties.com](mailto:kspecter@specterproperties.com)



**PLAT**

BCur1122 PAGE 558





## MAP

